

# WHCA / WiCAL


Wisconsin Health Care Association

Wisconsin Center for Assisted Living

## Business Partner Showcase

---

2024



We are thrilled to share with you the WHCA/WiCAL 2024 Business Partner Showcase. This showcase aims to highlight and celebrate our valued Business Partners who have been instrumental in supporting our association and member facilities.

In this showcase, you will find a collection of materials provided by our Business Partners. We encourage you to take a few minutes to review these materials, as they offer a wealth of information about the support, products, and services they offer. You can find this showcase, as well as previous editions, on our website at [www.whcawical.org/bps](http://www.whcawical.org/bps).

In addition to the showcase, we also want to draw your attention to our Business Partner Directory. This directory provides a comprehensive list of our Business Partners and the services they offer. We highly recommend utilizing this resource to connect with our Partners for any for any support, products, or services you and your facility may need.

At WHCA/WiCAL, we truly value the contributions of our Business Partners. They play a crucial role in supporting our association and our member facilities. We encourage you to take advantage of this opportunity to engage with our Partners and explore the possibilities they offer.

Thank you once again for your continued support of WHCA/WiCAL and our Business Partners.

**THANK YOU VALUED  
BUSINESS PARTNERS!**

# BUSINESS PARTNER DIRECTORY

---

Please use the link below to access and explore our extensive business partner directory, where you can find a wide range of trusted partners offering various products and services. Whether you are looking for a specific company or exploring options in a specific industry, our directory has got you covered.

With our user-friendly interface, you can easily browse through the directory in alphabetical order or search for partners based on the products or services they offer. This convenient feature allows you to quickly find the right business partner to meet your needs.

We believe that building strong relationships with WHCA/WICAL Business Partners is essential to your facility's operations and success. The Business Partner Directory aims to connect you with reliable and reputable companies, who support Wisconsin's long term care sector.

---

**Click the link below to access the  
Business Partner Directory:  
[Business Partner Directory](#)**

# TABLE OF CONTENTS

<b><i>Platinum Partners</i></b>	5
Behavioral Care Solutions	6
<b><i>Elite Premier Partners</i></b>	7
Martin Bros.	8
<b><i>Elite Partners</i></b>	9
EasyShifts	10
Healthcare Services Group	11
M3 Insurance	12
McKesson	13
Pathway Health	14
ThinkAnew	15
Wipfli	16
<b><i>Prime Partners</i></b>	17
CE Solutions	18
Kleenmark	19
Medline	20
Navigator Group Purchasing	21
von Briesen & Roper, s.c.	22
<b><i>Select Partners</i></b>	23
Anchor Solutions	24
Basic American/Graham Field	25
CliftonLarsonAllen LLP	26
DTN Staffing	27
Herzing university	28
iCare	29
Medtrition	30
PointClickCare	31
Theoria Medical	32
Thrifty White Pharmacy	33
<b><i>Standard Partners</i></b>	34
AlixRX	35
Greenfield Rehab	36
KARE	37
Ovitsky Vision Care	38
shiftkey + OnShift	39
WISHIN	40

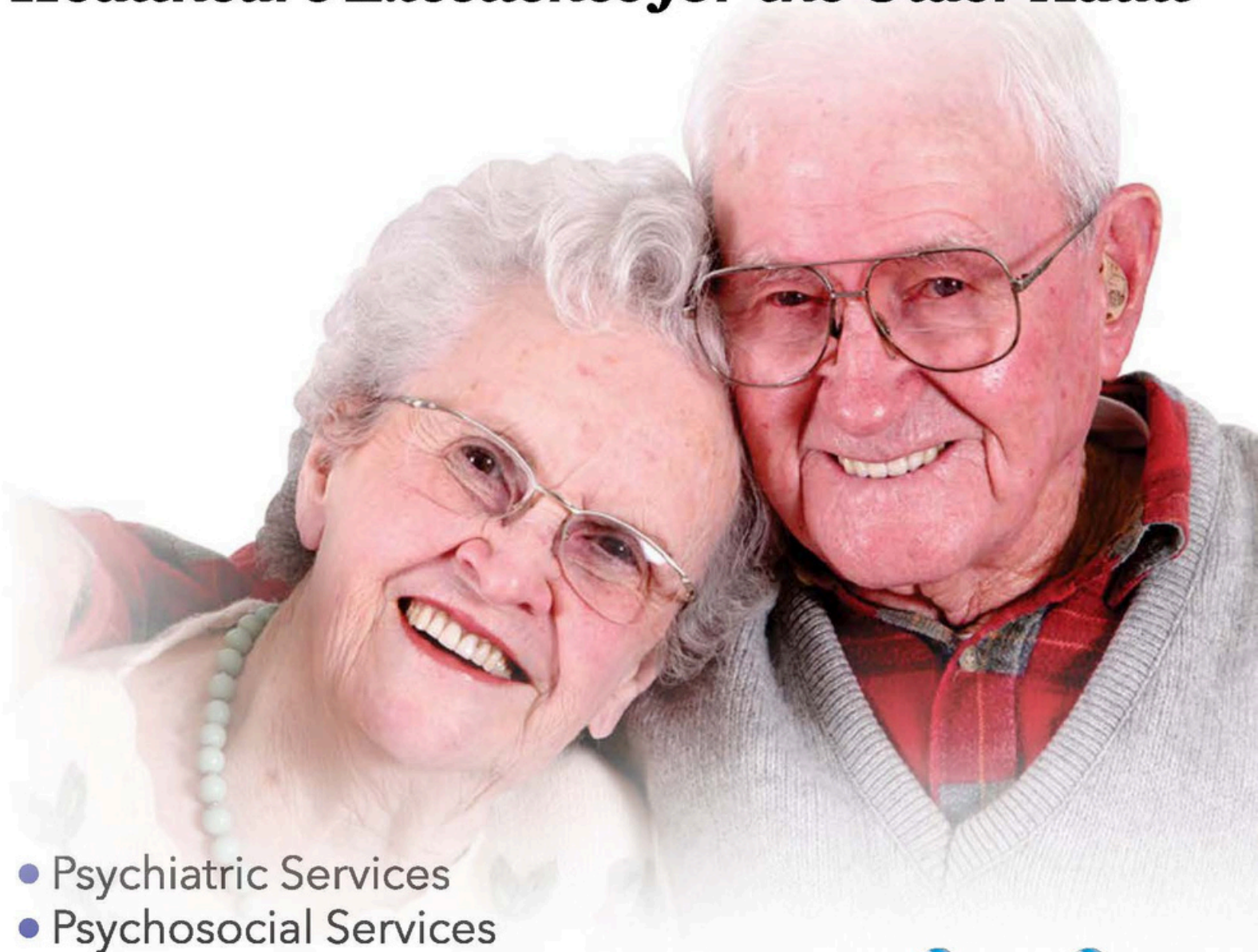




# **PLATINUM PARTNERS**

Annual Sponsorship of  
\$15,000+

# ***“Healthcare Excellence for the Older Adult”***



- Psychiatric Services
- Psychosocial Services
- Psychotherapy Services
- Behavioral Management
- Family Centered Services
- Tele-Mental Health Services
- Non-Pharmacological & Behavior Management Services



**BEHAVIORAL  
CARE SOLUTIONS**

Wisconsin Address: 11414 West Park Place, Suite 202, Milwaukee, WI 53224

Corporate Address: 39465 West 14 Mile Road, Novi, MI 48377

Phone All Locations: 877-906-9699 | Fax All Locations: 888-483-0118

Web: [www.behavioralcaresolutions.com](http://www.behavioralcaresolutions.com) | Email: [contact@bcsgps.com](mailto:contact@bcsgps.com)



# **ELITE PREMIER PARTNERS**

Annual Sponsorship of  
\$10,000+



# FOODSERVICE WITH A *difference!*

LEARN MORE AT  
[martinbros.com](http://martinbros.com)



## WHAT MAKES US DIFFERENT?

### SENIOR LIVING FOCUSED

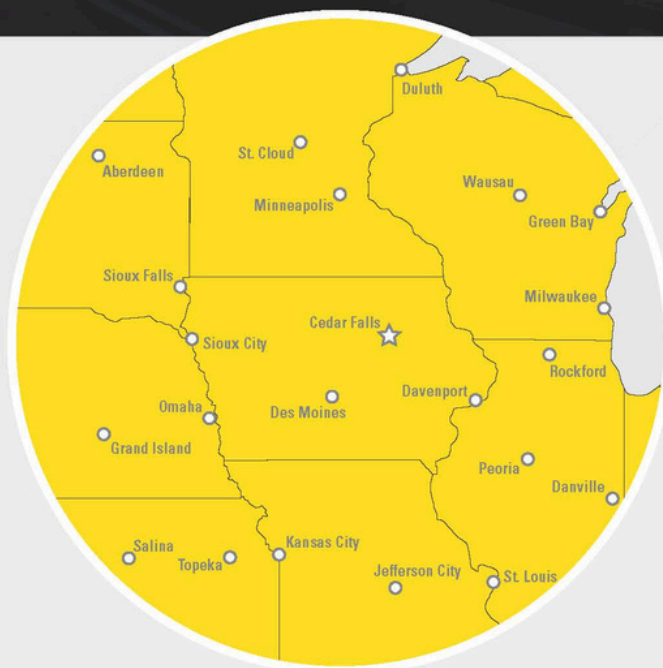
We work alongside your team to ensure your dining program runs smoothly. Our dedicated team of chefs, dietitians and specialists are empowered to support your success.

### LEGENDARY CUSTOMER SERVICE

As a family and employee-owned Foodservice Distributor, we are driven to do more than deliver. Our customers describe us as valued partners.

### INNOVATIVE SOLUTIONS

We provide solutions in times of challenge and in times of growth. Ask us about our Mpower Menu Suite, Spend Management Tools, Competency Training and more.



**Resident satisfaction is truly achieved when all things are working together.**

We place priority on helping you ensure you have happy residents, receiving quality care by trained and engaged staff members every single day.



**Martin Bros.**  
DISTRIBUTING CO INC





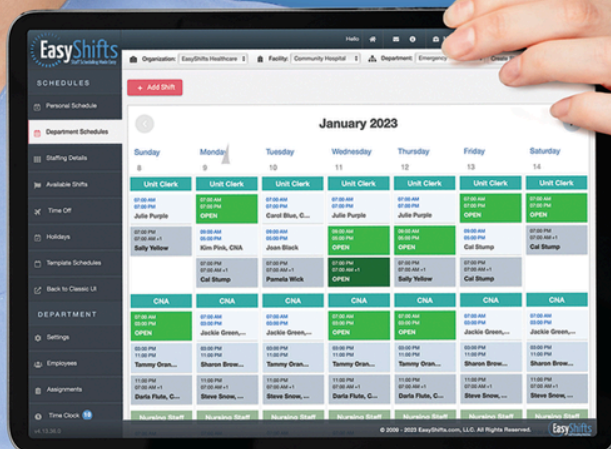
# **ELITE PARTNERS**

Annual Sponsorship of  
\$7,500+

# EasyShifts

Staff Scheduling Made Easy

## ONLINE SCHEDULING TOOL FOR HEALTHCARE



CREATED  
BY AN  
**RN**



# Healthcare SERVICES GROUP



For over 40 years, Healthcare Services Group (HCSG) has delivered exceptional Dining, Nutritional, Laundry and Housekeeping services to an ever-evolving healthcare market including senior living, assisted living and rehabilitation centers.



1-800-363-HCSG | <sup>3</sup>[www.hcsgcorp.com](http://www.hcsgcorp.com)





# yes/and

world-class expertise

+

individual attention



## Why settle for either/or?

With M3 you get it all. Global resources? **Yes, and** a local presence. Someone who listens? **Yes, and** asks the right questions. We're your advisor and your advocate, an innovator and a collaborator. We're a growth partner, a community partner, and your best of all worlds insurance partner. No compromises, no matter what.

That's the promise of **yes/and**.

Learn more:

[m3ins.com](https://m3ins.com) | 800.272.2443





# McKesson Medical-Surgical

*Delivering Supplies, Services and  
Solutions for You and Your Patients*



*As healthcare shifts from in-hospital to distributed and at-home care,  
you need a partner who helps improve care – wherever it's provided.*



**Distribution  
You Can  
Count On**

**99.8%**

order  
accuracy



**Single Source  
to Simplify  
Operations**

**300,000+**

high-quality  
medical  
products



**The Right Combination  
of Technology and  
Personal Service**

**1,600+**

field and  
Inside sales  
reps



**The Benefit of Scale to  
Healthcare Providers  
of Every Size**

**All-Inclusive**

pricing with no hidden  
fees and a generous  
return policy\*



**Information and  
Analytical Tools  
Designed for Your  
Business Needs**

**10**

Proprietary  
Technology  
Offerings



**98%**

Fill Rate



**Over  
10,000**

branded, generic  
and specialty  
pharmaceuticals



**8 Second**

Average Customer  
Service Speed  
to Answer



**Dedicated  
Support  
Teams**

that specialize in  
non-hospital care

## Proprietary Technologies

- McKesson Business Analytics<sup>SM</sup>
- SupplyManager<sup>SM</sup>
- OneTrack<sup>®</sup>
- VerbalCare<sup>®</sup>
- Inventory Manager
- ScanManager<sup>SM</sup>
- CSOSManager<sup>SM</sup>
- Implant Manager
- ORBITS<sup>®</sup> Charge Capture
- OrderLogic



Next-day delivery to

**95%**

of U.S. locations



**42k**

residential  
deliveries  
a day\*\*

## Customizable Ordering Solutions

Access to:

- Small Unit of Measure
- Dynamic ETA Options
- Patient Home Delivery\*\*
- And More

## Connectivity & Technology Teams

Setup and ongoing  
support to connect  
McKesson ordering to  
your preferred  
technology solutions.

*Products, services and expertise to improve care – wherever it's provided.*

**Steve Wanty, Sr. Account Manager**  
steve.wanty@mckesson.com  
(920)858-0760

Join today at [mms.mckesson.com](https://mms.mckesson.com)

**MCKESSON**

©2023 McKesson Medical-Surgical Inc.



**PATHWAY  
HEALTH**  
Insight | Expertise | Knowledge



## Moving Your Organization Upward

**PROUD  
PARTNER**

### INSIGHT

Client-centered support to identify opportunities for improvement.

### EXPERTISE

Solutions to improve clinical outcomes, achieve financial, regulatory and operational goals and navigate change.

### KNOWLEDGE

On-demand, classroom and customized training to achieve more.

---

## Services and Solutions for the Health Care Continuum



Consulting



Interim Talent



Training & Education



Solutions

**Need help? We're ready!**

**LEARN  
MORE:**



**pathwayhealth.com**





**ThinkAnew™**  
a ProCern company



# Empowering Care

**with Every Connection**

Think Anew delivers innovative technology solutions tailored for post-acute and senior care, nurturing the connection between caregivers and those they provide care for. Our seamless tech solutions streamline daily operations and improve quality care around the clock.

## Technology Solutions for Post-Acute & Senior Care

- FULLY MANAGED IT
- TELECOMMUNICATIONS
- IT AS A SERVICE
- DATA SERVICES

We are proud to be a part of



1-888-871-4266

[WWW.THINKANEW.COM](http://WWW.THINKANEW.COM)



Senior living facilities have never been more important — or faced more challenges. We help you navigate financial and regulatory issues, workforce shortages and soaring demand. Visit [wipfli.com/healthcare](https://wipfli.com/healthcare).

THREE

Perspective changes everything.

**WIPFLI**



# **PRIME PARTNERS**

Annual Sponsorship of  
\$5,000+

# Senior Care Education, Training, and Resources



VGM Education/CE Solutions is one of the industry's most complete continuing education solutions for senior care professionals, delivering effective, efficient, economical solutions to manage training and compliance.

## What We Offer:

- Online learning management system that includes state and federal training topics. Reporting made easy to monitor staff training compliance.
- Infection Compliance Solutions (ICS) Tool
- HRIS API: Integrate your HR System with CE Solutions to save time on updating staff information.
- Performance Appraisal System for staff evaluations and competency assessments.
- Volunteer/contract worker training.





# YOUR RESIDENTS DESERVE KLEEN

---

KleenMark is Wisconsin's premier  
facility cleaning services, supply,  
& equipment company

**CONTACT US TO  
GET A QUOTE!**  
[kleenmark.com](http://kleenmark.com)  
608-258-3131





# Fighting infection in long-term care facilities

How do you build a strong team defense?

Meeting the complex needs of residents is demanding work. With everything on your staff's plate, infection prevention isn't always top-of-mind. Caregivers and workers can miss a hand hygiene moment, forget to glove or mask or inadequately disinfect the air and hard surfaces.



**Up to 3 million serious infections**

occur every year in long-term care facilities.<sup>1</sup>

## The reality: infection prevention practices often fall short

Many long-term care leaders acknowledge the challenges in their facilities.

**63%**

acknowledge hand hygiene compliance gaps<sup>2</sup>



**51%**

believe staff fail to use PPE properly<sup>2</sup>



**40%**

believe surface cleaning and disinfection is inadequate<sup>2</sup>



## Discover a comprehensive approach to preventing HAIs

Developed by clinicians, our holistic **Long-Term Care Solution for Infection Prevention** helps everyone—clinicians, EVS teams, staff and leaders—understand their role in preventing healthcare-associated infections (HAIs). From products to training, it offers everything needed to promote best practices around hand hygiene, proper PPE use and cleaning and disinfection to prevent HAIs.



Hand Hygiene



PPE



Environmental Services



## Infection Prevention

## Ready to take infection prevention to the next level?

Build a strong team defense. Our Long Term Care Solution for Infection Prevention can empower your staff to build the skills and accountability needed to sustain a culture of safety.

To learn more visit [go.medline.com/ip-long-term-care](https://go.medline.com/ip-long-term-care) or speak to a Medline specialist at 1-800-MEDLINE (1-800-633-5463)

**References:** 1. Nursing Homes and Assisted Living (Long-Term Care Facilities (LTCFs). Centers for Disease Control and Prevention. Available at: <https://www.cdc.gov/longtermcare/index.html>. Accessed September 10, 2021. 2. From risk assessments submitted by respondents to Medline. Data on file.

© 2023 Medline Industries, LP. All rights reserved. Medline is a registered trademark of Medline Industries, LP. MKT19W4612952 / e23273 / 49





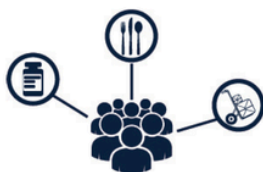
**An Experienced Leader  
in Group Purchasing**

## **Navigator Member Benefits:**

### **Save money by lowering costs and increasing efficiencies**

Gain access to a full range of programs, tools, and services to help you achieve your organizational and financial goals

#### **Our Solutions Include**



##### **Group Purchasing**

Our extensive contract portfolio and select distributor program helps provide savings opportunities. Navigator members gain leverage on all purchasing needs:

- ◆ Food & Dietary Supplies
- ◆ Medical Products & Services
- ◆ Business Products & Services
- ◆ Hospitality
- ◆ Maintenance, Repair and Operations
- ◆ Kitchen Equipment & Supplies
- ◆ Office Supplies
- ◆ Capital Equipment



##### **Culinary Consulting Services**

Navigator provides members access to culinary and operational expertise to help reduce costs, drive operational efficiencies, increase revenues, and improve quality:

- ◆ Culinary Academy
- ◆ Product Reviews
- ◆ Menu Strategy & Planning
- ◆ Continuing Education Credit Offerings



##### **Software Solutions**

- ◆ **Navigator Menu Advantage:** This cloud-based solution seamlessly integrates with your current food distributor software to help improve efficiencies, free-up labor time and ultimately save you money.
- ◆ **Navigator Member Portal:** Offers a central resource for insights into Navigator spend, an easy way to find vendors for specific projects, the ability to manage the addition of a new locations online, and more.

**To explore the benefits of Navigator Membership  
email [info@navigatorgpo.com](mailto:info@navigatorgpo.com) or call (800) 642-3020.**





## Bringing it all Together

von Briesen not only has expertise in long-term care law, we provide a full range of legal services to the senior living industry. That full range of services includes:

- Federal and state survey and certification matters and plans of correction
- Appeals of regulatory citations, including informal dispute resolution, independent informal dispute resolution (IDR and IIDR), and hearings
- Regulatory compliance
- Changes of Ownership (CHOWs) filings for licensure and payor enrollments
- Acquisition and sale of entities
- Senior living development, including real estate and construction
- Labor and employment
- Collective bargaining and union organizational campaigns
- Litigation

### **One firm bringing it all together.**

For tailored solutions to your most challenging needs, please contact Stacy C. Gerber Ward at [stacy.gerberward@vonbriesen.com](mailto:stacy.gerberward@vonbriesen.com) or Aaron M. Smith at [aaron.smith@vonbriesen.com](mailto:aaron.smith@vonbriesen.com).

**von Briesen**

von Briesen & Roper, s.c. | Attorneys at Law

[vonbriesen.com](http://vonbriesen.com)

Milwaukee • Madison • Neenah • Waukesha  
Green Bay • Chicago • Eau Claire



# **SELECT PARTNERS**

Annual Sponsorship of  
\$3,500+



## YOUR TRUSTED PARTNER IN Relocation, FF&E Installation & Warehousing



**ANCHOR**  
SOLUTIONS

Our experts are here to help you with installation and logistics so that you can leave property damage, delays, and extra costs behind.

### Is Your Team Struggling With?

- **Time delays** when relocating, causing interruptions in operations
- **Challenging logistics** leading to more work, delays & extra expenses
- **Complicated installations** that require professional expertise

### Anchor is Here to Help

Anchor Solutions has the capabilities, services, and experienced personnel needed to create a positive experience, whether we are handling a relocation, installation, or providing warehousing services, you can expect a stress-free, seamless partnership with our team.

#### With Anchor solutions, you'll get...



#### Customized Software

Our Logistics Project Managers utilize our customized software program and nationwide partners to manage and oversee every step of your logistics project.



#### Expert Installation

We seamlessly execute complex installation projects to ensure uninterrupted operations with on-time delivery.



#### Streamlined Logistics

Our coordinators handle the details, including paperwork across vendors, trucking companies, and warehouses.

### ANCHOR SOLUTIONS

#### Nationwide Services

Our network of reliable warehouses & partners ensures quality wherever you need us.

#### Logistics

We utilize our customized software program and dedicated vendors to manage and oversee every step of your project.

#### FF&E Installation

We integrate with your facilities team to perform reconfigurations, ergonomic adjustments or new furniture build outs.

#### Warehousing

We provide a full range of storage solutions and a team of professionals to help you manage and store assets.

#### Commercial Moving

We guide you through the process to ensure your business is up and running as quickly as possible.

#### Residential Moving

Personalized moving services with the high level of care you need for your valued possessions.



**ANCHOR**  
SOLUTIONS

**Schedule a Consultation Call Today**

414.355.6683 • [www.anchorsolutions.com](http://www.anchorsolutions.com)



PRODUCTS PROUDLY MADE IN WI, USA



**BEDS\*MATTRESSES\*ROOM FURNITURE\*DINING  
FURNITURE\*WHEELCHAIRS\*BARIATRIC**



**COMPLIMENTARY VIRTUAL  
INTERIOR DESIGN AND  
DEMO OPTIONS... JUST ASK!**



Luke Smet  
Territory Manager  
920.904.0989

- ✓ DINING
- ✓ RESIDENT ROOMS
- ✓ LOUNGE
- ✓ OFFICE
- ✓ ACTIVITY
- ✓ OUTDOOR

LINK TO MORE PRODUCT INFO [www.grahamfield.com](http://www.grahamfield.com) / MESSAGE LUKE [lsmet@grahamfield.com](mailto:lsmet@grahamfield.com)



STAKEHOLDER DEMANDS.  
ORGANIZATIONAL NEEDS.

# It takes balance.™

You ride the line between solving today's challenges and planning for what's next.  
At CLA we bring balance to business to create opportunities now and for the future.



*We'll get you there.*

**CPAs | CONSULTANTS | WEALTH ADVISORS**

Michael Peer 414-721-7580 | Amy Vehrs 414-721-7595

**CLAconnect.com**

©2024 CliftonLarsonAllen LLP. CLA (CliftonLarsonAllen LLP) is an independent network member of CLA Global. See [CLAGlobal.com/disclaimer](https://CLAGlobal.com/disclaimer).  
Investment advisory services are offered through CliftonLarsonAllen Wealth Advisors, LLC, an SEC-registered investment advisor.

# The Leading Healthcare Staffing Agency in the Midwest.

DTN Staffing has been meeting staffing needs in longterm care, assisted living and hospitals since 2007.

We are a professional staffing agency that provides RNs, LPNs, CMAs, CNAs, Housekeepers, Cooks and other Specialty Positions to over 350 facilities. Delivering excellence by offering flexible, dependable staffing options in North Dakota, South Dakota, Minnesota, Montana, Washington, Wisconsin and Iowa.

[dtnstaffing.com](https://dtnstaffing.com) 701-667-2884



## DTN Staffing



# How Can I Help You

## Solve Your Most Pressing Healthcare Workforce Issues?

### Qualified Employees:



#### **Are hard to find**

Leverage connections with our current students and extensive network of recent graduates and alumni.



#### **Are difficult to keep**

Let's talk about our *stackable credentialing programs and course bundling options*. Herzing has designed an approach to education that rewards experience and provides a path forward to the next level.



#### **Want to grow**

Let us share a concrete example of moving an environmental services employee to a Medical Assistant. *We can do this at scale – 50+ employees at a time!*



### **Sound interesting?**

Let's schedule a time to discuss these innovative solutions to your toughest workforce issues.

**Kelly Bicy**

**813-316-2084 • [kbicy@herzing.edu](mailto:kbicy@herzing.edu)**

[Herzing.edu/partnerships/employers](https://herzing.edu/partnerships/employers)





# Let's Work Together!

## **iCare specializes in serving the D-SNP population.**

Let us show you how we deliver positive outcomes for individuals with Medicare and Medicaid by addressing medical, social, *and* community service needs.



Independent Care Health Plan (iCare) provides managed care coverage for over 45,000 people throughout Wisconsin, most of whom have low incomes or are disabled. iCare has been securing the wellness of people with complex conditions for three decades. Our health insurance plans include iCare Medicare Plan (HMO D-SNP), BadgerCare Plus, iCare Family Care Partnership, and Medicaid SSI.

Throughout our growth in Wisconsin, we have remained dedicated to serving complex populations, including the dual eligible, low-income and disabled, with the utmost care.

Just drink ~~8oz.~~<sup>2oz.</sup>  
~~twice~~<sup>once</sup> a day  
to support  
faster  
healing.

### Wound Healing Nutrition, 2-oz, Once A Day

Expedite contains a clinically studied dual action formulation of dipeptides and citrulline to stimulate collagen synthesis while driving nitric oxide production.

Wound Specific oral nutrition supplements reduce healing time, labor and overall costs related to the management of pressure injuries<sup>1</sup>. Find out more about Expedite at [www.medtrition.com](http://www.medtrition.com)

Regional Sales Rep  
Sara Le Brun-Blashka  
[slebrun@medtrition.com](mailto:slebrun@medtrition.com)



1. Shafrin, Jason, Shanshan Wang, and Kirk W. Kerr. "Wound-Specific Oral Nutritional Supplementation Can Reduce the Economic Burden of Pressure Injuries for Nursing Homes: Results from an Economic Model." *Journal of Long Term Care*, 2023, 166-77. <https://doi.org/10.31389/jlc.173>.

 *More than nutrition,*  
**Medtrition®**



**PointClickCare®**

With PointClickCare,  
providers and patients  
get more.

More **visibility**

More **insights**

More **accuracy**

More time caring  
for those who  
need it most.



Ready to join North America's most  
comprehensive care collaboration network?

**Learn  
More**



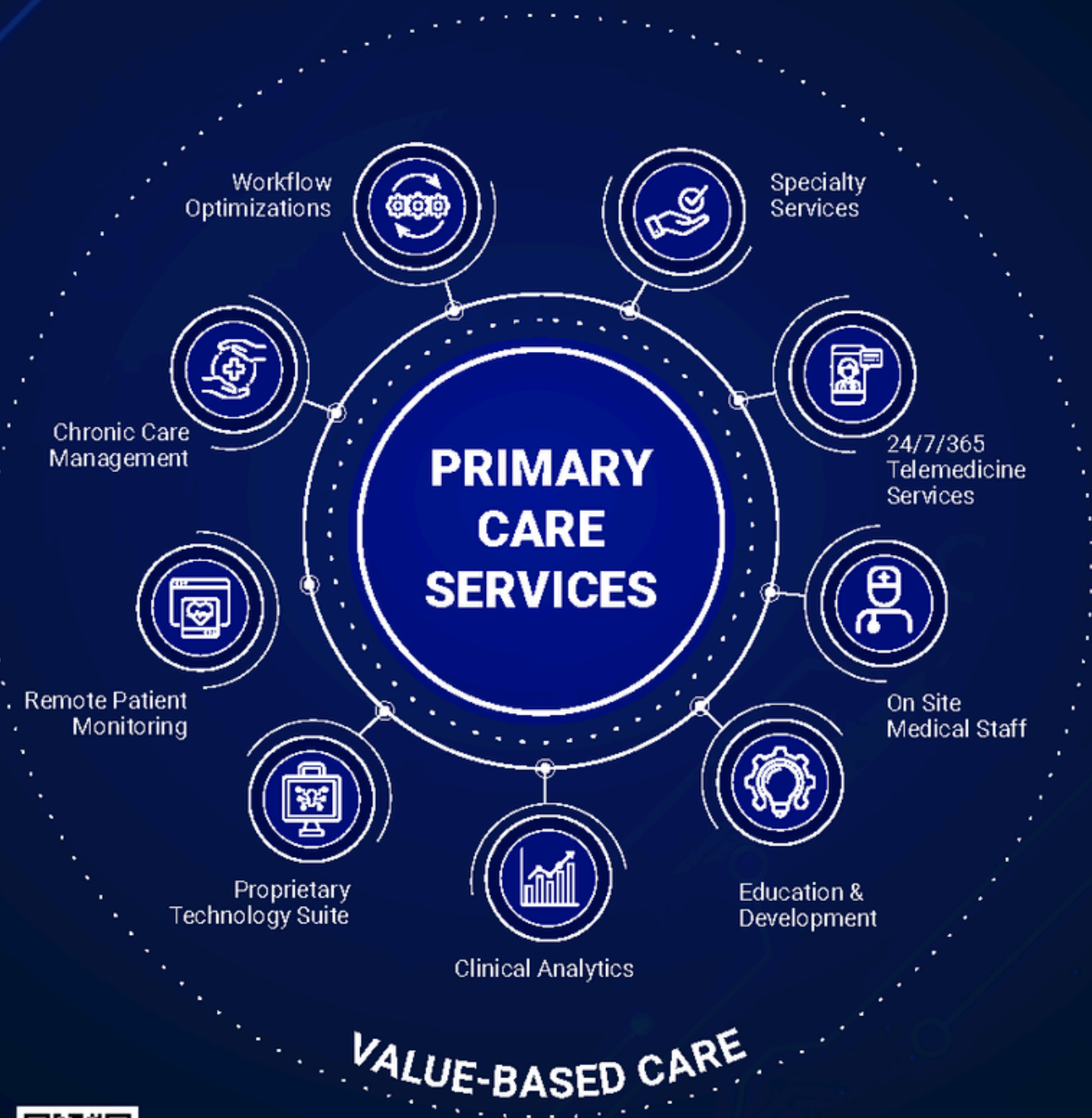
Scan code with your phone camera

[PointClickCare.com](https://PointClickCare.com)

# THEORIA

— MEDICAL —

We are a **tech-enabled, value-based primary care provider** serving senior living communities nationwide. We offer comprehensive clinical solutions tailored to the needs of each community along with opportunities to participate in value-based care.



For more information, scan our QR code  
or visit [www.theoriamedical.com](http://www.theoriamedical.com)

833-578-2763  
[info@theoriamedical.com](mailto:info@theoriamedical.com)

# Expect more from Thrifty White Pharmacy.

Thrifty White works with **YOU** to customize services that work for your community.

## What communities are saying.

*"Thrifty White Pharmacy has been great to work with! They have wonderful customer service and are attentive to our needs. I highly recommend!!!"*

*Katie Grant, Chief Clinical Officer Milwaukee Catholic Home*

*"He's (Gary, Pharmacy Manager) just a good guy, we can call with questions on admissions and he will talk it out with us."*

*Ann Kehoss, Director of Nursing Congregational Home*

For more information contact:

Dan Tidemanson

[dtidemanson@thriftywhite.com](mailto:dtidemanson@thriftywhite.com) | (414) 531-5527

[www.thriftywhite.com](http://www.thriftywhite.com)





# **STANDARD PARTNERS**

Annual Sponsorship of \$650+



Are your nurses tired of waiting?  
**Place a licensed pharmacy on site.**

**Right drug, right time,  
right price. AlixaRx.**



**SAFETY:**

Reduce medication errors



**ACCESS:**

Instant on-site dispensing  
with 400+ medications



**SAVINGS:**

Eliminate drug waste and  
save nursing hours

**Don't settle for a one-size-fits-all pharmacy  
solution. We combine a board-certified,  
geriatric-specialty clinical pharmacist with  
on-site medication dispensing technology to  
deliver a total medication solution.**

Contact:

**Shelly Patton, Regional Sales Director**  
10132 W. 76th St., Eden Prairie, MN 55344  
Mobile: 612-380-6929  
Email: [shelly.patton@alixarx.com](mailto:shelly.patton@alixarx.com)



# GREENFIELD REHAB



**Therapist-owned and operated company fully dedicated to  
Wisconsin communities.**



## **Become a Dementia Certified Practitioner!**

- **Dementia Solutions**
- **Consulting & Training**
- **Certification Seminars**

**Physical Therapy**

**Occupational Therapy**

**Speech Therapy**

**Wellness Programs**



**Greenfield Rehabilitation Agency's turnover rate is less than 5%. This means  
therapy responsiveness and consistency for you and your campus.**

**Michelle Strege**  
MS/CCC-SLP CADDCT-CDP  
Certified Alzheimer's Disease  
and Dementia Care Trainer  
262-409-8585  
mstrege@grawi.com  
www.grawi.com

**TOP  
WORK  
PLACES**

**journal sentinel**





# KARE

**Like our Heroes?**  
**Hire them full-time**  
**for FREE!**



**Get started today!**



**Providing Onsite Vision Care Services to  
Long Term Care Communities since 1983**

**[www.ovitskyvisioncare.com](http://www.ovitskyvisioncare.com) 1-773-588-3090**

# Don't get left behind

In one year, the majority of SAMI customers **grew their census 4x more than the national average** census growth rate, resulting in an average **\$1.2M revenue increase per building**

See what SAMI can do for your organization at [shiftkey.com/sami](https://shiftkey.com/sami)



 **shiftkey** + **OnShift**

This is not intended to represent or guarantee that current or future users will achieve the same or similar results.





Join nearly

**2,200 participants**

in Wisconsin's Trusted Health  
Information Exchange.



**WISHIN**

WISCONSIN STATEWIDE HEALTH INFORMATION NETWORK

608-235-7100 | [WISHIN.ORG](http://WISHIN.ORG)