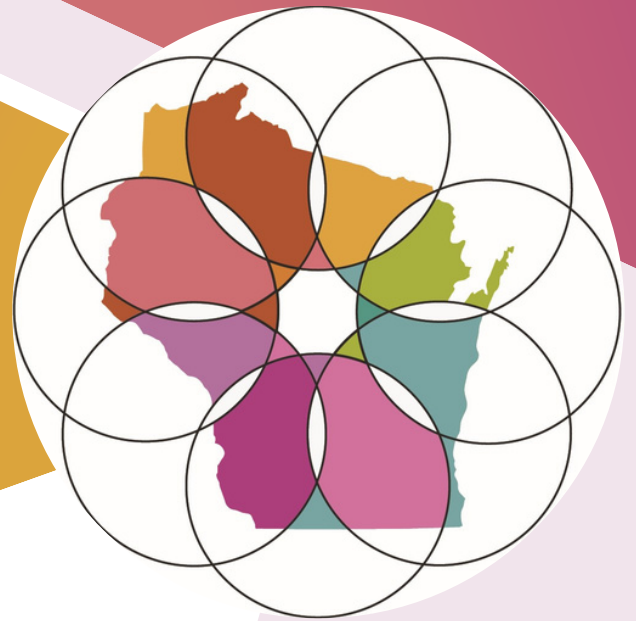


2023

PLEDGE  
PARTNERS



WHCA/WiCAL

SPRING CONFERENCE  
& EXPO


# 2023 Pledge Partners

---

WHCA/WiCAL is proud to recognize our 2023 Pledge Partners. These WHCA/WiCAL partners have demonstrated continued, unwavering support of the association and to our members. The 2023 Pledge Partners are the Association's Elite Premier, Elite, Prime, and Select Partners, and provide over \$100,000 in combined annual sponsorship to WHCA/WiCAL. Because of their sponsorship, WHCA/WiCAL is able to continue its efforts to support Wisconsin's post-acute care providers, host events like the Annual Spring Conference and Fall Convention, and provide quality educational opportunities to our members.

WHCA/WiCAL is incredibly grateful for each one of these partners and their steadfast commitment to long term care. We thank these partners for their pledge to help us safeguard and strengthen representation of the long term and post-acute care profession. WHCA/WiCAL could not continue the necessary advocacy, leadership, education, and support services extended to our members without the commitments from these Pledge Partners.

Please take a moment to visit with each of these Pledge Partners during Spring Conference. And help us in thanking them for their generosity and support!



# 2023 Pledge Partner Listing

## ELITE PREMIER PARTNER

### M3 Insurance

Pat LeMire • 608-288-2807 • [pat.lemire@m3ins.com](mailto:pat.lemire@m3ins.com) • [m3ins.com](http://m3ins.com)

---

## ELITE PARTNERS

### Behavioral Care Solutions

Robert Clemente  
248-895-5470  
[Robbie@bcsgps.com](mailto:Robbie@bcsgps.com)  
[behavioralcaresolutions.com](http://behavioralcaresolutions.com)

### Healthcare Services Group

Jason Skolaski  
920-216-2458  
[Jskolaski@hcsghcorp.com](mailto:Jskolaski@hcsghcorp.com)  
[hcsghcorp.com](http://hcsghcorp.com)

### McKesson Medical Surgical

Jake Byrnes  
763-807-6120  
[Jake.byrnes@mckesson.com](mailto:Jake.byrnes@mckesson.com)  
[mckesson.com](http://mckesson.com)

### Think Anew

Stacey Yoakum  
601-853-1953  
[Syoakum@thinkanew.com](mailto:Syoakum@thinkanew.com)  
[thinkanew.com](http://thinkanew.com)

### Wipfli LLP

Larry Lester  
414- 431-9300  
[Llester@wipfli.com](mailto:Llester@wipfli.com)  
[wipfli.com](http://wipfli.com)

---

## PRIME PARTNERS

### CE Solutions

Deb Martin  
866-650-3400  
[Debm@discovercesolutions.com](mailto:Debm@discovercesolutions.com)  
[discovercesolutions.com](http://discovercesolutions.com)

### Martin Bros Distributing

Tim Yoder  
920-420-7165  
[Tyoder@martinbros.com](mailto:Tyoder@martinbros.com)  
[martinbros.com](http://martinbros.com)

### Medline Industries, Inc.

Mark Mega  
847-208-8623  
[Mmega@medline.com](mailto:Mmega@medline.com)  
[medline.com](http://medline.com)

### Navigator Group Purchasing, Inc.

Sarah Dippen  
806-787-6575  
[Sarah.dippen@navigatorgpo.com](mailto:Sarah.dippen@navigatorgpo.com)  
[navigatorgpo.com](http://navigatorgpo.com)

### von Briesen & Roper, s.c.

Stacy Gerber Ward  
414-287-1568  
[Sgward@vonbriesen.com](mailto:Sgward@vonbriesen.com)  
[vonbriesenhealth.com](http://vonbriesenhealth.com)

---

## SELECT PARTNERS

### Basic American/ Grahamfield

Luke Smet  
920-904-0989  
[Lsmet@grahamfield.com](mailto:Lsmet@grahamfield.com)  
[grahamfield.com](http://grahamfield.com)

### CliftonLarsonAllen LLP

Michael Peer  
414-721-7580  
[Michael.peer@claconnect.com](mailto:Michael.peer@claconnect.com)  
[claconnect.com](http://claconnect.com)

### DTN Staffing

Billie Stanton  
701-667-2884  
[billie@dtnstaffing.com](mailto:billie@dtnstaffing.com)  
[dtnstaffing.com](http://dtnstaffing.com)

### Herzing University

Lisa Carr  
262-955-5048  
[Licarr@herzing.edu](mailto:Licarr@herzing.edu)  
[herzing.edu](http://herzing.edu)

### Husch Blackwell

Carrie Noonan  
608-258-7121  
[Carrie.noonan@huschblackwell.com](mailto:Carrie.noonan@huschblackwell.com)  
[huschblackwell.com](http://huschblackwell.com)

### Pathway Health Services, Inc.

Hope Summers  
651-964.5657  
[Hope.summers@pathwayhealth.com](mailto:Hope.summers@pathwayhealth.com)  
[pathwayhealth.com](http://pathwayhealth.com)

### PointClickCare

Margorie Vyse  
905-858-8885  
[Associations@pointclickcare.com](mailto:Associations@pointclickcare.com)  
[pointclickcare.com](http://pointclickcare.com)

### procareHR

Katie Shelander  
763-349-4465  
[Kshelander@procarehr.com](mailto:Kshelander@procarehr.com)  
[procarehr.com](http://procarehr.com)

### Thrifty White Pharmacy

Dan Tidemanson  
414-531-5527  
[Dtidemanson@thriftywhite.com](mailto:Dtidemanson@thriftywhite.com)  
[thriftywhite.com](http://thriftywhite.com)

### Worthy Insurance

Taylor Sabres  
773-945-9000  
[tsabres@worthyinsurance.com](mailto:tsabres@worthyinsurance.com)  
[worthyinsurance.com](http://worthyinsurance.com)



# ELITE PREMIERE PARTNERS

Annual Sponsorship:  
\$10,000+



Booth  
505

# WORLD-CLASS EXPERTISE AND INDIVIDUAL ATTENTION

**Don't settle for either-or. With M3, you get both.**

Some things in our world demand compromise, but insurance and risk management shouldn't be among them. You need an advisor who knows your business AND is connected to the best information, ideas, and programs in the world. Expert attention from exceptional people — that's the M3 difference.

**Experience the M3 difference at [m3ins.com](https://m3ins.com)**


Or call us at:  
**800.272.2443**

PROPERTY & CASUALTY — EMPLOYEE BENEFITS — M3 FINANCIAL — M3 ELEVATE



# ELITE PARTNERS

**Annual Sponsorship:  
\$7,500+**



Booth  
502

# THEIR HEALTH DEPENDS ON YOURS.

Your organization means everything to your community. We help you overcome challenges and provide more seniors with a place to feel at home. Visit [wipfli.com/healthcare](http://wipfli.com/healthcare).

Perspective changes everything.

**WIPFLI**

Booth  
509

When choosing a reliable  
IT partner for your  
long-term care business,

# IT MATTERS WHO YOU PICK.



There when you need I.T.®



1-888-871-4266 | [ThinkAnew.com](http://ThinkAnew.com) | [sales@thinkanew.com](mailto:sales@thinkanew.com)



# *“Healthcare Excellence for the Older Adult”*

Booth  
403

- Psychiatric Services
- Psychosocial Services
- Psychotherapy Services
- Behavioral Management
- Family Centered Services
- Tele-Mental Health Services
- Non-Pharmacological & Behavior Management Services



**BEHAVIORAL  
CARE SOLUTIONS**

Wisconsin Address: 11414 West Park Place, Suite 202, Milwaukee, WI 53224

Corporate Address: 39465 West 14 Mile Road, Novi, MI 48377

Phone All Locations: 877-906-9699 | Fax All Locations: 888-483-0118

Web: [www.behavioralcaresolutions.com](http://www.behavioralcaresolutions.com) | Email: [contact@bcsgps.com](mailto:contact@bcsgps.com)

# Healthcare SERVICES GROUP


Booth  
510



For over 40 years, Healthcare Services Group (HCSG) has delivered exceptional Dining, Nutritional, Laundry and Housekeeping services to an ever-evolving healthcare market including senior living, assisted living and rehabilitation centers.



1-800-363-HCSG | <sup>3</sup>[www.hcsgcorp.com](http://www.hcsgcorp.com)



***Delivering for you,  
so you can deliver  
a difference.***

Whether you're on the front lines or behind the scenes, working 15 hour shifts or waiting to see patients again, you're making a difference in patients' lives. From our teams packing boxes to the ones bringing them to your door, however you need us, we're here to deliver.

**[mms.mckesson.com/covid-19](https://mms.mckesson.com/covid-19)**

© 2020 McKesson Medical-Surgical Inc.

**Booth  
401**

# PRIME PARTNERS

Annual Sponsorship:  
\$5,000+

# Transform Your Compliance

VGM Education/CE Solutions is an Iowa-based company that has been providing health care education for over 30 years. From offering online training courses to helping track and manage continued education, our team exists to help support and enhance the learning needs of yours.



## What We Offer:

- Online learning management system that includes state and federal training topics
- Reporting made easy to monitor staff training compliance
- Performance Appraisal System for staff evaluations and competency assessments
- Volunteer/contract worker training
- NEW Infection Compliance Solutions tool to compile surveillance and antibiotic stewardship data to easily meet Infection Control tracking and reporting needs
- Integrate your HR System with CE Solutions to save time on updating staff information
- Cost-effective solutions for your budget



Booth  
411

[www.discovercesolutions.com](http://www.discovercesolutions.com)  
866-650-3400

## Contact Deb



Deb Martin RN, BSN  
[debm@discovercesolutions.com](mailto:debm@discovercesolutions.com)  
855-874-6930



## Bringing it all Together

von Briesen not only provides expertise in health law, we provide a full range of legal services to the health industry. That full range of services includes specialties such as real estate, construction, labor and employment, employee benefits, and intellectual property – one firm bringing it all together.

For tailored solutions to your most challenging needs, please contact Stacy C. Gerber Ward at [stacy.gerberward@vonbriesen.com](mailto:stacy.gerberward@vonbriesen.com) or Aaron M. Smith [aaron.smith@vonbriesen.com](mailto:aaron.smith@vonbriesen.com).

**von Briesen**  
von Briesen & Roper, s.c. | Attorneys at Law

[vonbriesen.com](http://vonbriesen.com)

Milwaukee • Madison • Neenah • Waukesha  
Green Bay • Chicago • Eau Claire



**A Full-Service GPO**

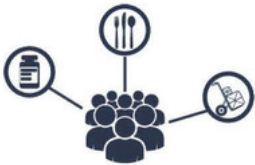
**Programs, Tools & Services to help you achieve your resident and financial goals**

# The Largest and Most Experienced Full-Service GPO Exclusively Focused on Senior Living

Gain access to a full range of programs, tools, and services to help you achieve your resident and financial goals

**Booth  
604**

## Our Solutions Include



### Group Purchasing

Our extensive contract portfolio and select distributor program helps provide savings opportunities. Navigator GPO members gain leverage on all purchasing needs:

- ◆ Food & Dietary Supplies
- ◆ Medical Products & Services
- ◆ Business Products & Services
- ◆ Hospitality
- ◆ Maintenance, Repair and Operations
- ◆ Kitchen Equipment & Supplies
- ◆ Office Supplies
- ◆ Capital Equipment



### Culinary Consulting Services

Navigator provides members access to culinary and operational expertise to help reduce costs, drive operational efficiencies, increase revenues, and improve quality:

- ◆ Culinary Academy
- ◆ Menu Strategy & Planning
- ◆ Product Reviews
- ◆ Continuing Education Credit Offerings



### Software Solutions

- ◆ **Navigator Menu Advantage:** This cloud-based solution seamlessly integrates with your current food distributor software to help improve efficiencies, free-up labor time and ultimately save you money.
- ◆ **Navigator Procure-To-Pay:** A customizable, cloud-based eProcurement system. Enables members to gain spend & VA visibility, implement controls, reduce costs and create efficiencies.
- ◆ **Navigator Member Portal:** Offers a central resource for insights into Navigator spend, an easy way to find vendors for specific projects, the ability to manage the addition of a new locations online, and more.

Contact us today to explore the benefits of Navigator membership.



**Contract/Program  
Management**



**Customized Member  
Support**



**Data  
Analytics**



**Continuing  
Education**



**MHA Legislative  
Affairs**

**VISIT US AT BOOTH 604**

# FOODSERVICE WITH A *difference!*

Booth  
501

LEARN MORE AT  
[martinbros.com](http://martinbros.com)



## WHAT MAKES US DIFFERENT?

### SENIOR LIVING FOCUSED

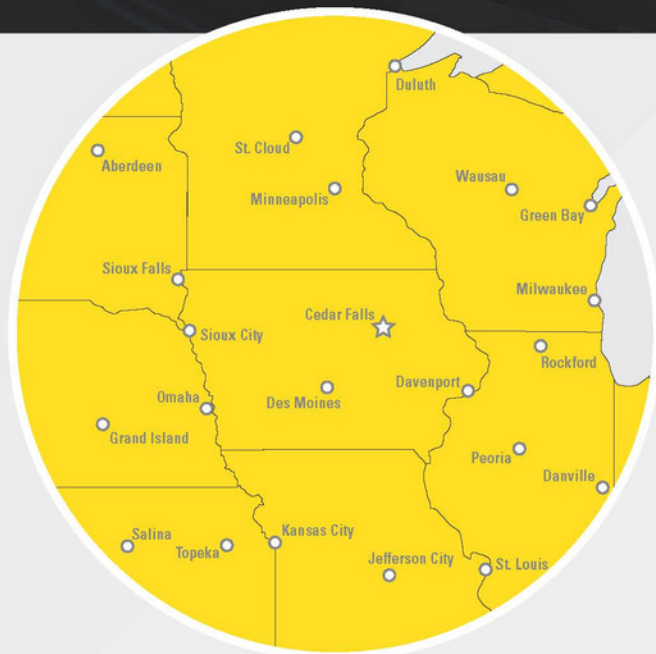
We work alongside your team to ensure your dining program runs smoothly. Our dedicated team of chefs, dietitians and specialists are empowered to support your success.

### LEGENDARY CUSTOMER SERVICE

As a family and employee-owned Foodservice Distributor, we are driven to do more than deliver. Our customers describe us as valued partners.

### INNOVATIVE SOLUTIONS

We provide solutions in times of challenge and in times of growth. Ask us about our Mpower Menu Suite, Spend Management Tools, Competency Training and more.



**Resident satisfaction is truly achieved when all things are working together.**

We place priority on helping you ensure you have happy residents, receiving quality care by trained and engaged staff members every single day.



**Martin Bros.**  
DISTRIBUTING CO INC



EMPLOYEE OWNED



# Creating connections for optimal performance.

**The pressure to do more with less has never been greater.** Our tailored mix of products, services and technology equip you to take on clinical and financial challenges for the long term.



## How can we help?

Contact your Medline Representative or visit [medline.com](http://medline.com) to learn more.

©2020 Medline Industries, Inc. Medline is a registered trademark of Medline Industries, Inc. MKT19W1078285 / 55



Booth  
303

# SELECT PARTNERS

Annual Sponsorship:  
\$3,000+

# EXPECT MORE FROM THRIFTY WHITE PHARMACY

## Customized services to fit your needs!

Thriftly White works with **YOU** to customize services that work for your community.

- ✓ LTC Web Portal
- ✓ Consulting Services
- ✓ Punch Cards
- ✓ Service Focused

- ✓ EMAR Connectivity
- ✓ Medication Packaging Options



Booth  
410

For more information contact:  
Dan Tidemanson

dtidemanson@thriftlywhite.com | (414) 531-5527 | www.thriftlywhite.com

## HR Solutions for the Senior Living Industry

### We're Different Than The Other Guys

We have a different approach. Unlike the other guys, we don't serve businesses that have nothing to do with the care industry. We only offer HR solutions to facilities offering home care, skilled nursing, senior housing, assisted living, disability services, and long-term care.



#### Care is All We Do

We hire people from the senior care and disability care industries. Everything we do is built for the care industry.



#### Medium to Enterprise

Unlike other HR providers, our model is built to handle large care operations with 50-10,000 employees.



#### Care-Specific Services

Since we are built for you, our services are custom-designed to help drive better HR outcomes for care providers.



#### Tech for Care Providers

Our technology is built to ensure scheduling, time and attendance, reporting, and functionality meets our clients' needs.



**63% of our staff has experience working in the care industry.**

**Stop by our booth to learn more!**

Booth  
310

**procare**<sup>HR</sup>  
procarehr.com

# DTN Staffing

Booth  
711

## The Leading Healthcare Staffing Agency in the Midwest.

DTN Staffing has been meeting staffing needs in longterm care, assisted living and hospitals since 2007.

We are a professional staffing agency that provides RNs, LPNs, CMAs, CNAs, Housekeepers, Cooks and other Specialty Positions to over 350 facilities. Delivering excellence by offering flexible, dependable staffing options in North Dakota, South Dakota, Minnesota, Montana, Washington, Wisconsin and Iowa.

Sheriff Sharma 213-248-1489 | dtnstaffing.com



# worthy

INSURANCE

*Honesty is the best policy... Who's writing yours?*

At Worthy Insurance, we value our clients above all else. Therefore, we commit to the following service standards:

- Anticipate the needs of our clients by identifying expectations and working towards meeting their needs.
- Hold ourselves accountable for organizational service commitments.
- Listen to our clients' requests and take immediate action to assist them.
- Inform clients on what to expect and normal processing time.
- Be as transparent as possible with clients.
- Keep clients informed of any delays in service.

## COVERAGE OFFERINGS

Worthy Insurance partners with top-rated insurance carriers to provide coverage for all of your needs.

- ✓ Workers' Compensation
- ✓ General & Professional Liability
- ✓ Property
- ✓ Inland Marine
- ✓ Cyber Liability
- ✓ Commercial Auto

hello@worthyinsurance.com  
worthyinsurance.com  
(773) 945-9000

Booth  
200

## WHAT WE BRING

### RISK MANAGEMENT

- Loss Control
- Claims Management
- Claims Analysis
- Safety Culture Implementation

### ADDITIONAL RESOURCES

- Workers' Compensation Audits
- Flood Zone Disputes
- Property Tax Assessment Disputes
- Waste Management Solutions

- ✓ Directors and Officers
- ✓ Crime
- ✓ Bonds
- ✓ Excess
- ✓ Employment Practices Liability
- ✓ Umbrella

# Advance Your Career CONVENIENTLY

Herzing University's unique class schedule lets you complete your education when it's convenient for you.

*What I liked most about my experience at Herzing University was the program had both online and on-campus classes. This enabled me to keep my full-time job and gain hands-on experience. The instructors were engaging, and the staff was always helpful."*

Ya-Quin Childs

Booth  
402

Nursing Healthcare Business Technology Public Safety

## EXPLORE YOUR BENEFITS

- Scholarships available on all undergraduate and graduate degree programs. **30%** on LPN, **20%** on all other nursing and graduate programs. **10%** on all other undergraduate programs.
- Extensive academic and personal support throughout your time as a student and post graduation
- Waived enrollment fees
- Free evaluations of prior learning for transfer credit
- Additional benefits available for Military servicemen and their family members

[i'm] ready to talk

To learn more about the many benefits with Herzing University, please call Lisa Carr at 262.649.1710, email [licarr@herzing.edu](mailto:licarr@herzing.edu) or visit [Herzing.edu/partners](http://Herzing.edu/partners) and choose WHCA/WiCAL as your employer



**HERZING**  
UNIVERSITY

SI0CPA04223376




**PRODUCTS PROUDLY MADE IN WI, USA**

**BEDS\* MATTRESSES\* ROOM FURNITURE\* DINING FURNITURE\* WHEELCHAIRS\* BARIATRIC**








**COMPLIMENTARY VIRTUAL INTERIOR DESIGN AND DEMO OPTIONS... JUST ASK!**



**Luke Smet**  
Territory Manager  
920.904.0989

- ✓ DINING
- ✓ RESIDENT ROOMS
- ✓ LOUNGE
- ✓ OFFICE
- ✓ ACTIVITY
- ✓ OUTDOOR

Booth  
608

LINK TO MORE PRODUCT INFO [www.grahamfield.com](http://www.grahamfield.com) / MESSAGE LUKE [lsmet@grahamfield.com](mailto:lsmet@grahamfield.com)



**PATHWAY  
HEALTH**  
Insight | Expertise | Knowledge

Booth  
302



## Moving Your Organization Upward

### INSIGHT

Client-centered support to identify opportunities for improvement.

### EXPERTISE

Solutions to improve clinical outcomes, achieve financial, regulatory and operational goals and navigate change.

### KNOWLEDGE

On-demand, classroom and customized training to achieve more.

### SERVICES AND SOLUTIONS FOR THE HEALTH CARE CONTINUUM



Consulting



Interim Talent



Training & Education



Solutions

Need help? We're ready!



VISIT BOOTH 302

[pathwayhealth.com](http://pathwayhealth.com)



Booth  
211

## Create Opportunities

CLA assembles the team you need for high performance.

WEALTH ADVISORY | OUTSOURCING  
AUDIT, TAX, AND CONSULTING

Michael Peer  
414-476-1880  
CLAconnect.com



Investment advisory services are offered through CliftonLarsonAllen Wealth Advisors, LLC, an SEC-registered investment advisor ©2021 CliftonLarsonAllen LLP

# HUSCH BLACKWELL

Learn More at:  
<https://www.huschblackwell.com>

Tom O'Day | Partner  
608.234.6017  
[tom.oday@huschblackwell.com](mailto:tom.oday@huschblackwell.com)

PointClickCare®

Booth  
602

Gives You More

More **data**. More **connections**. More **insights**.



Join North America's most comprehensive  
care collaboration network.